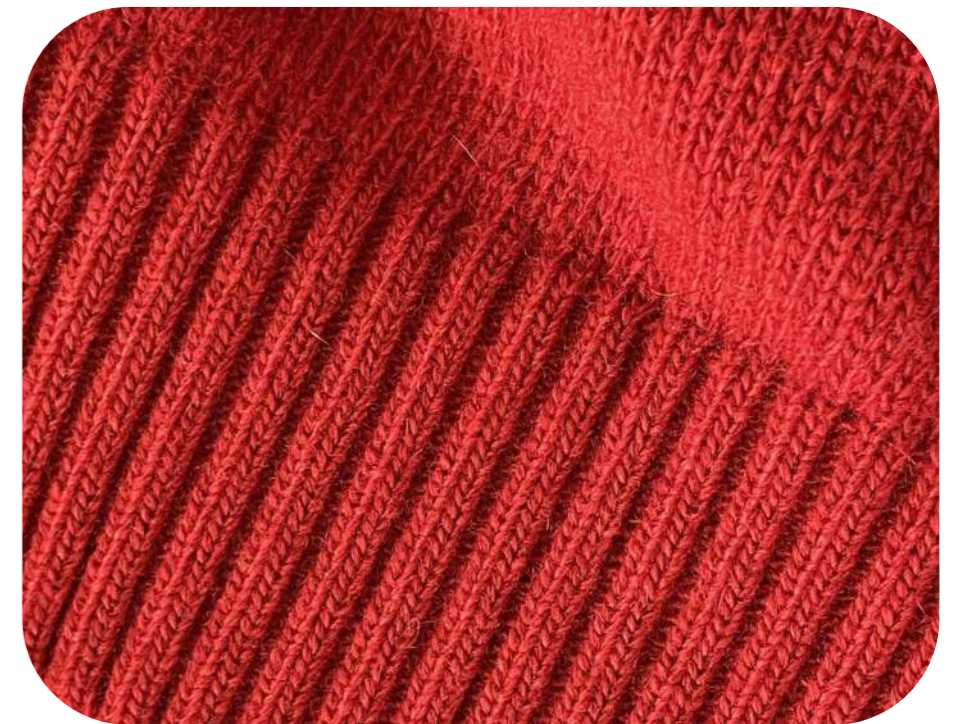


# Knitwear Guide



# Contents

---

---

**Intro** **03**

---

**How to start** **06**

---

**Knit structures & Application** **08**

- Rib Knit
- Jersey
- Jacquard interlock
- Vanisé
- Endings

---

**Yarn** **14**

- Composition
- Colour
- Gauge

---

**Customization** **25**

- Embroidery
- Patch
- Chain Stitch
- Dyes

---

**Labels** **29**

---

**Care instruction** **31**

- Cotton knit care
- Wool knit care

**Intro**

# Knit structures

---

Knitted structure consists of interconnected loops which usually results in a very stretchy fabric. This method requires more flexible conductive yarns than any other structures because the yarn is highly curved to form a loop.



Fig: Knitting is the method of creating fabric by transforming continuous strands of yarn into a series of interlocking loops.

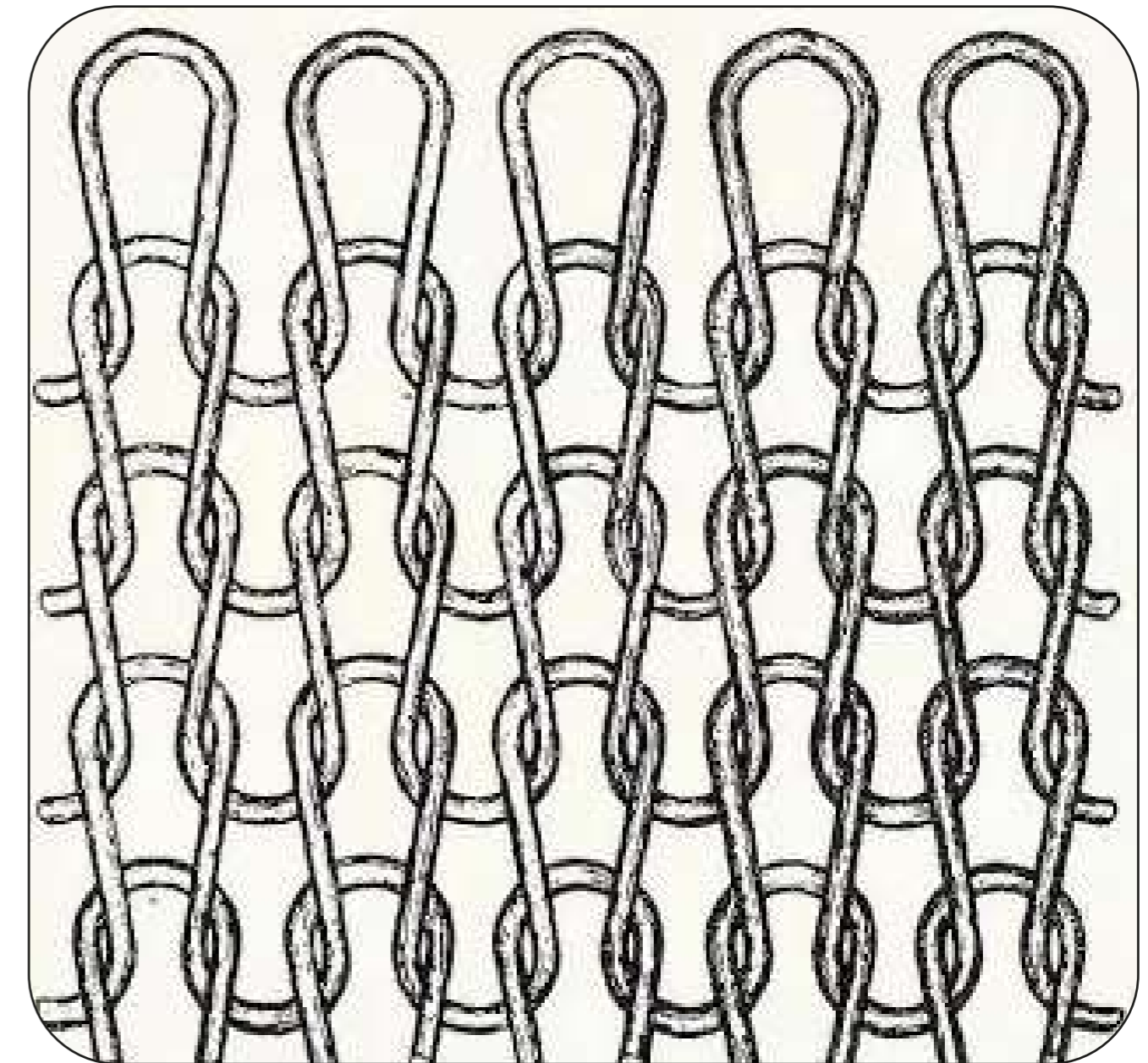


Fig: Knitting structure

# Knitting Methods

---

Knitting is the method of creating fabric by transforming continuous strands of yarn into a series of interlocking loops. There are 3 knitting methods for production:

**Cut & Sew:** The knitting machine produces larger panels of fabric, from which the pattern gets cut and the pieces assembled with a sewing machine.

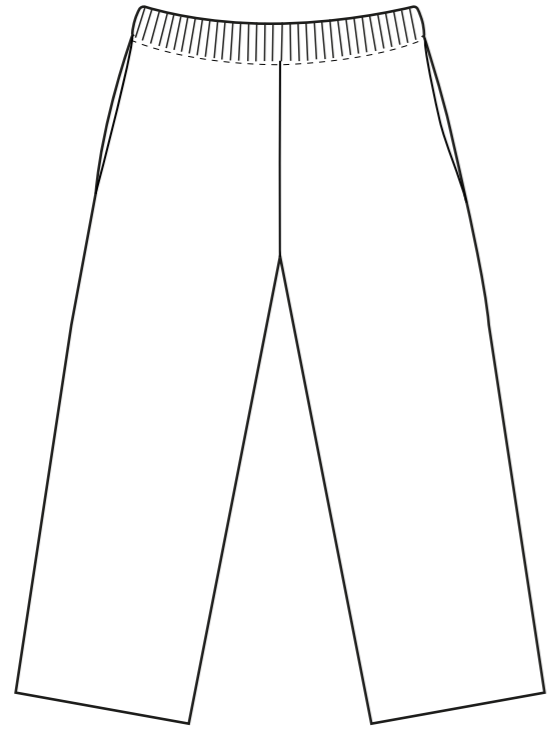
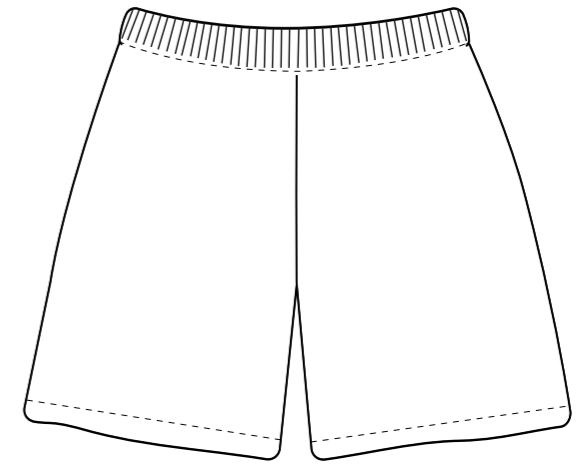
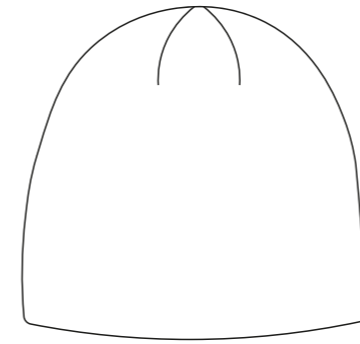
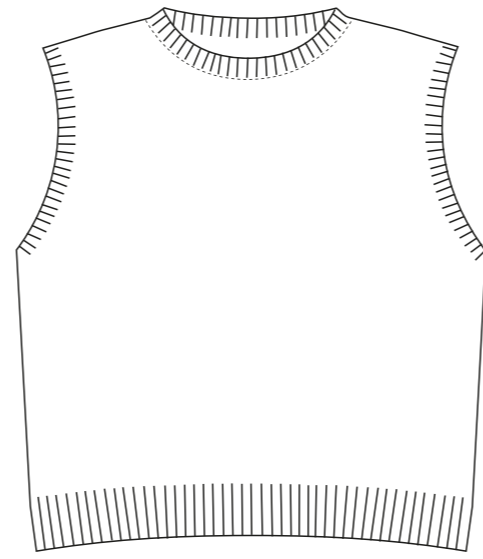
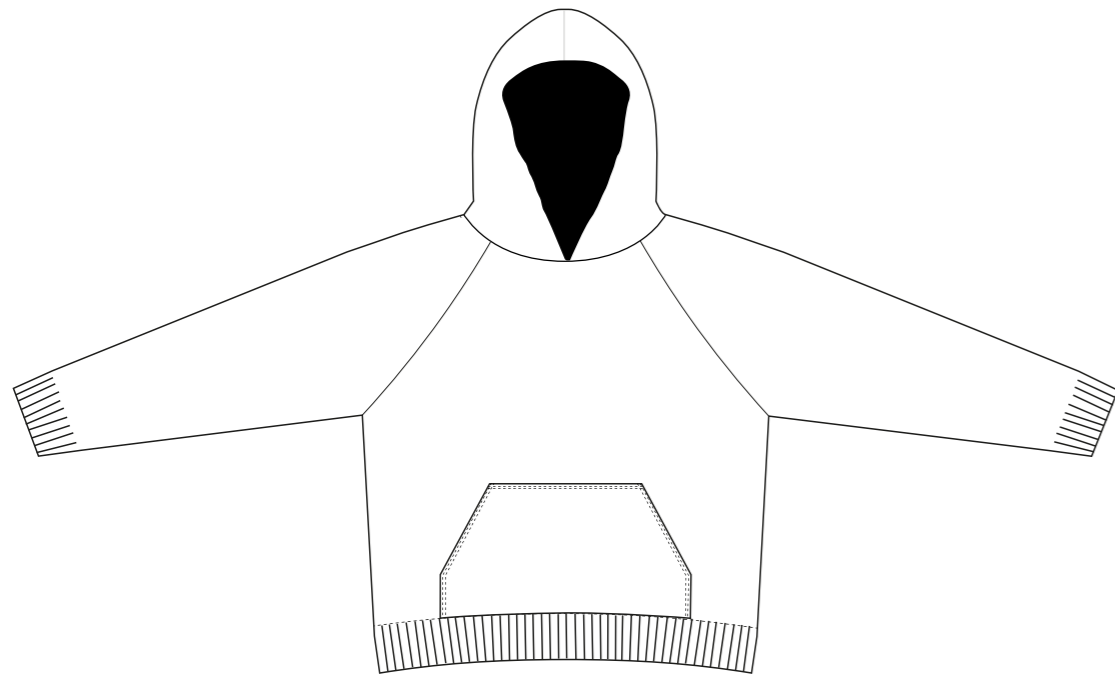
**Fully fashioned:** The knitting machine produces panels in the correct shape, reducing cutting waste. The parts then get linked by hand, resulting in amore premium product.

**3D knitting:** This knitting machine is a more advanced version of a flat knitting machine. The machine creates the entire garment in one seamless piece.

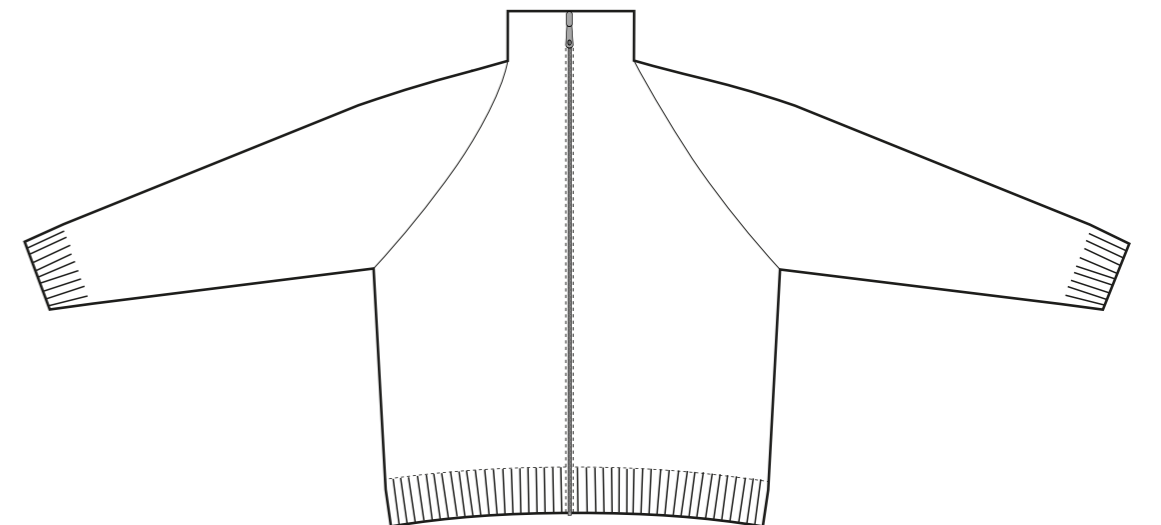
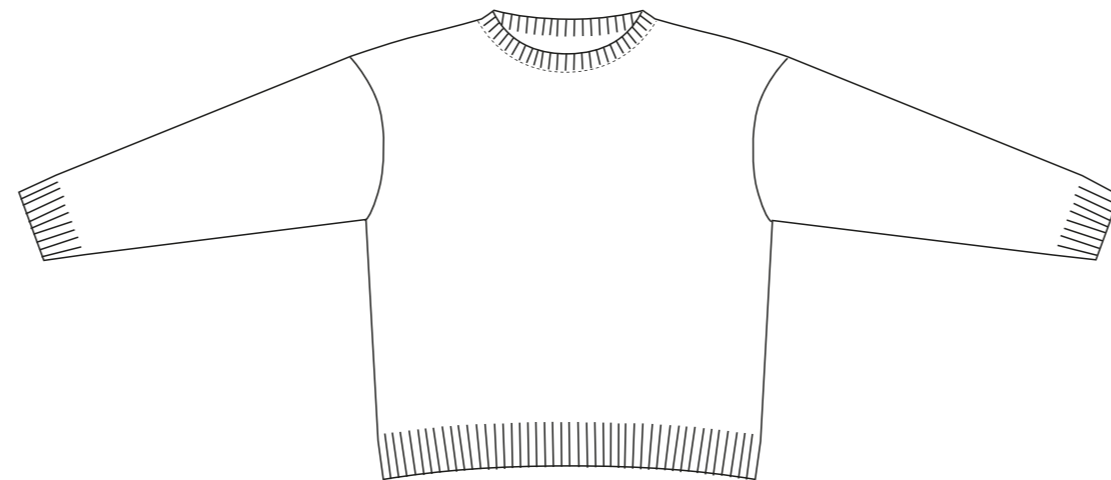
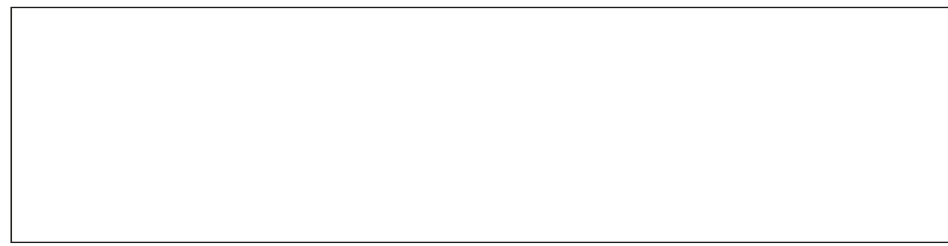
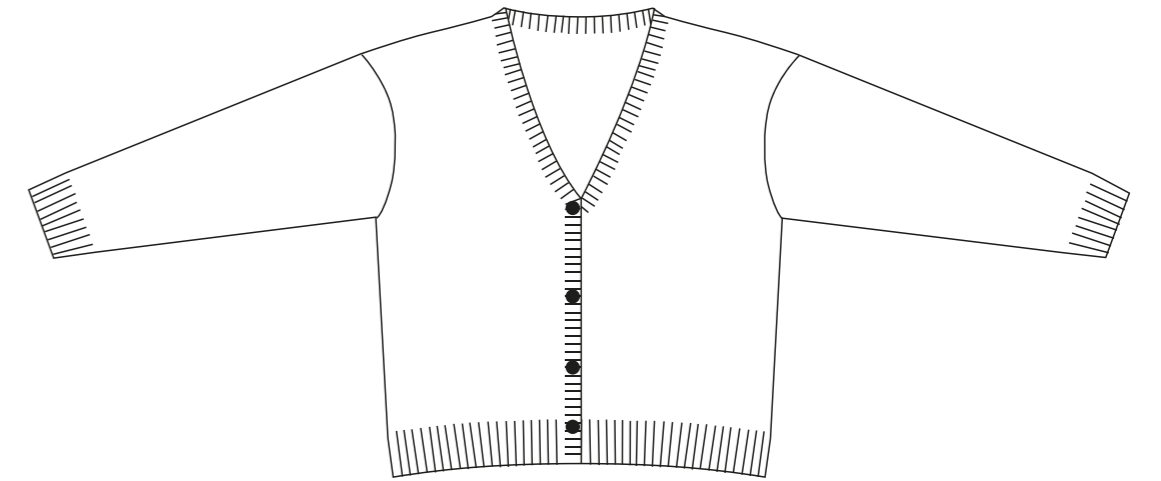


Fig: Flat knitting machine (fully fashioned)

At Labwear, we use the fully fashioned knitting method.

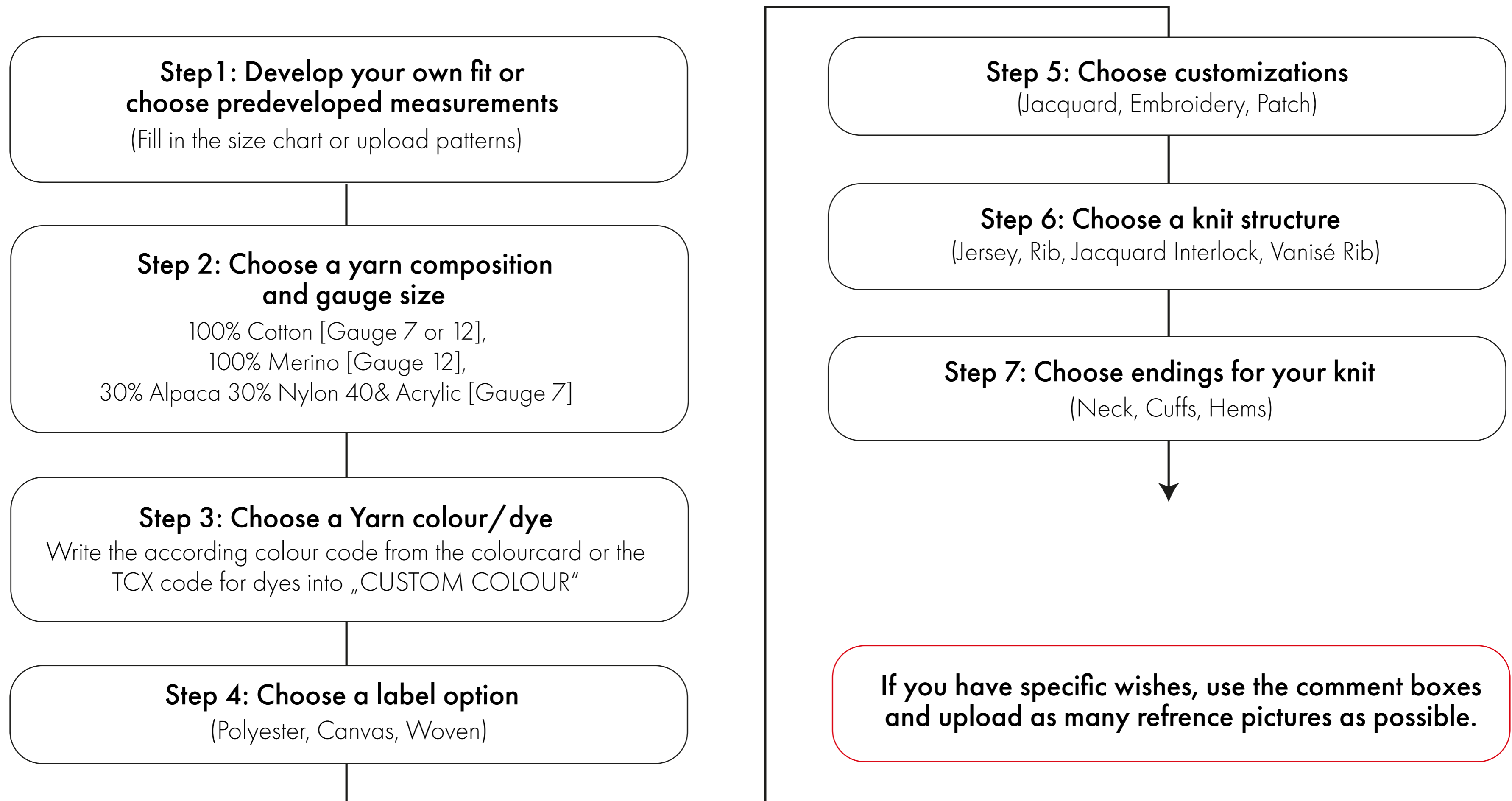


## How to start



# Design process on Labwear OS

\* to access the Knitwear Program on labwear OS you need a PLUS subscription





# Knitting structures

Jersey

Rib Stitch

Jacquard interlock

Vanise rib

# Jersey

---

Jersey is a type of knitwear made with a weft knitting technique using two sets of needles, typically based on a jacquard, rib or interlock structure. This is the standard technique in knitwear.



Fig: Single Layer Jersey

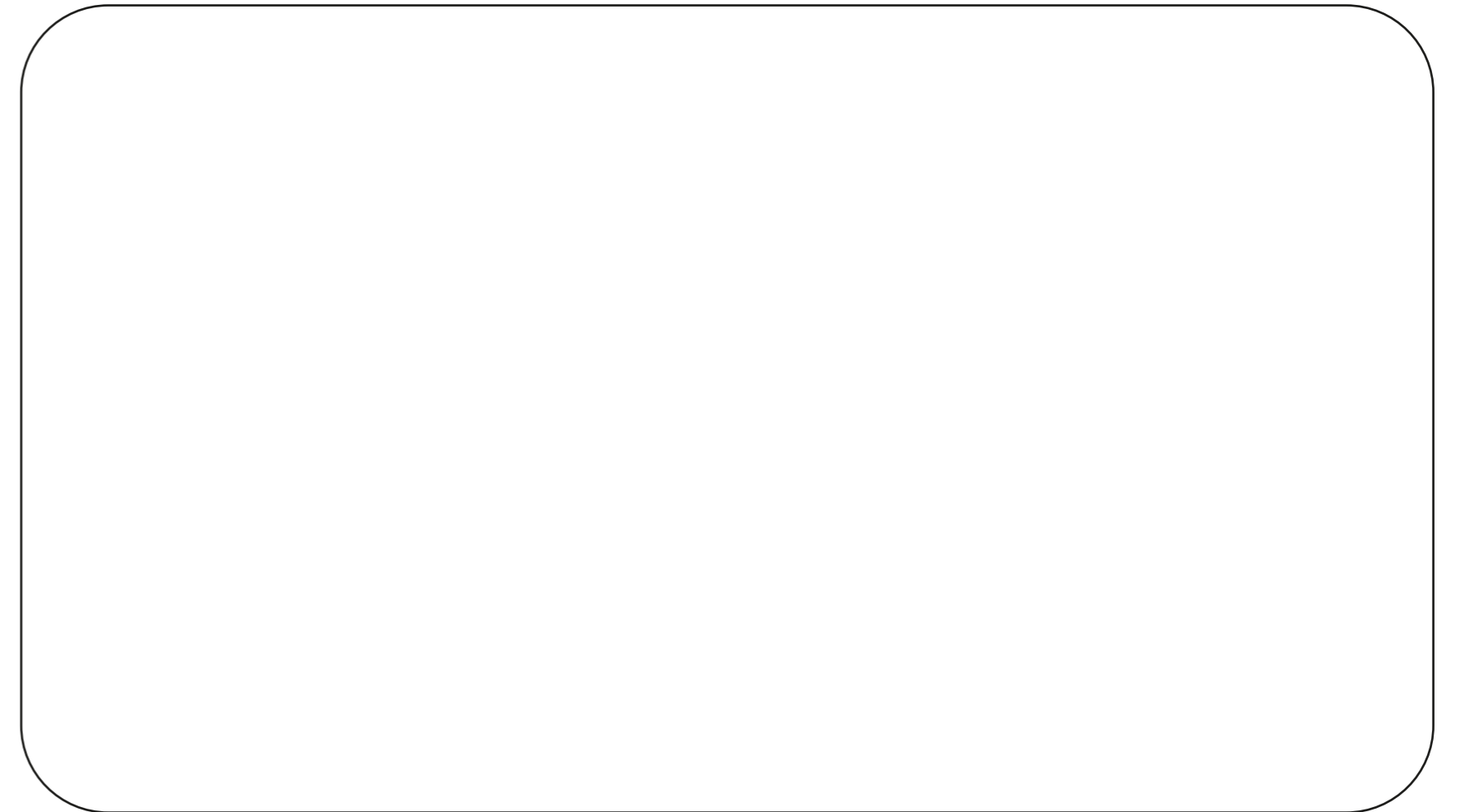


Fig: Double Layer Jersey

# Rib

Rib knit is a type of knitting pattern that creates a stretchy textured fabric. It is characterized by vertical lines, known as ribs, which are created by alternating knit and purl stitches. In LabwearOS, you'll be able to select your preferred rib type. (1x1, 2x2, 3x3 etc. )

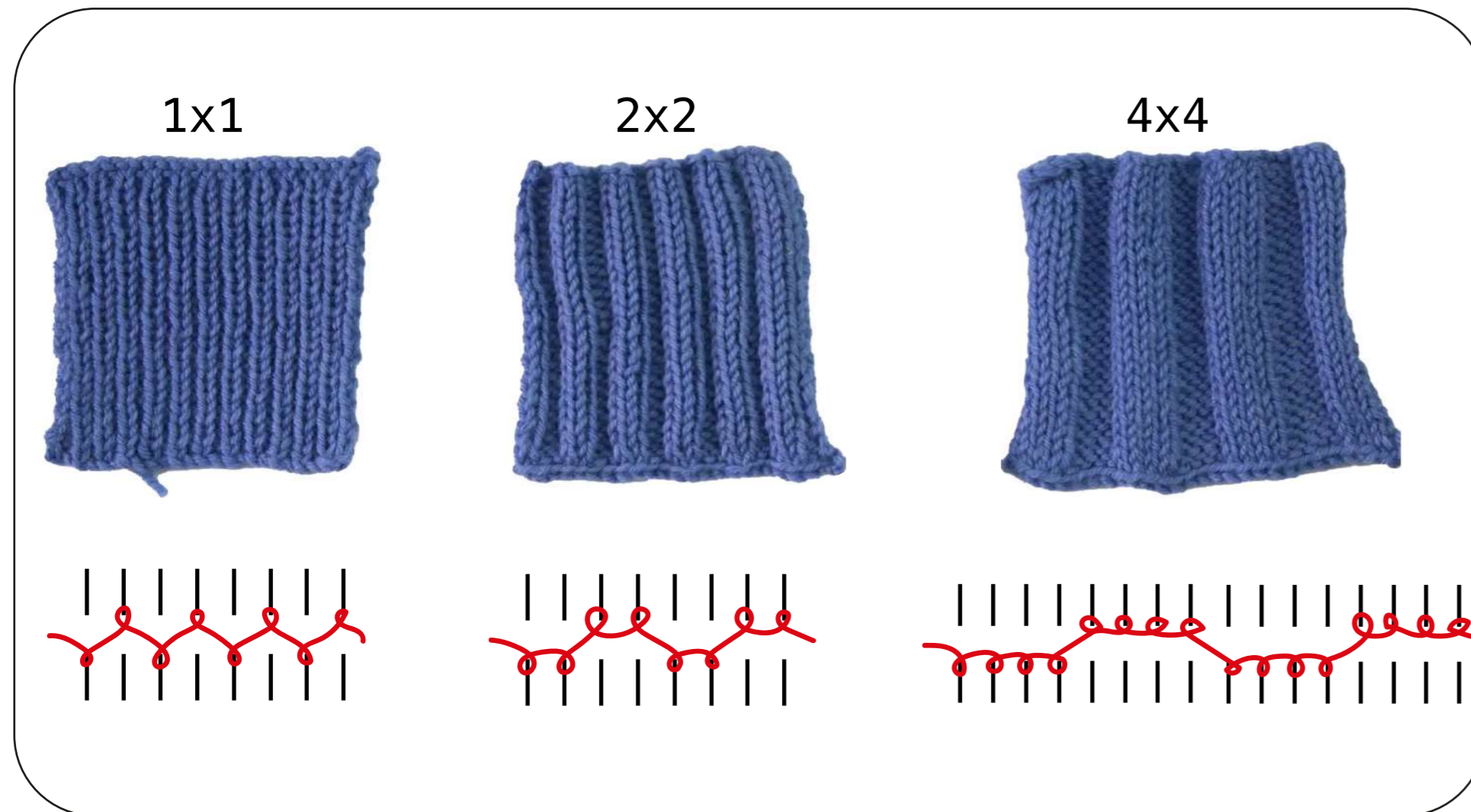


Fig: Rib illustration



Fig: Rib examples

# Jacquard interlock

---

Jacquard interlock is a method that combines the principles of jacquard knitting and interlock knitting in a double-layered structure. This double-layered structure creates an even backside of the jacquard design.



Fig: Jacquard interlock frontside

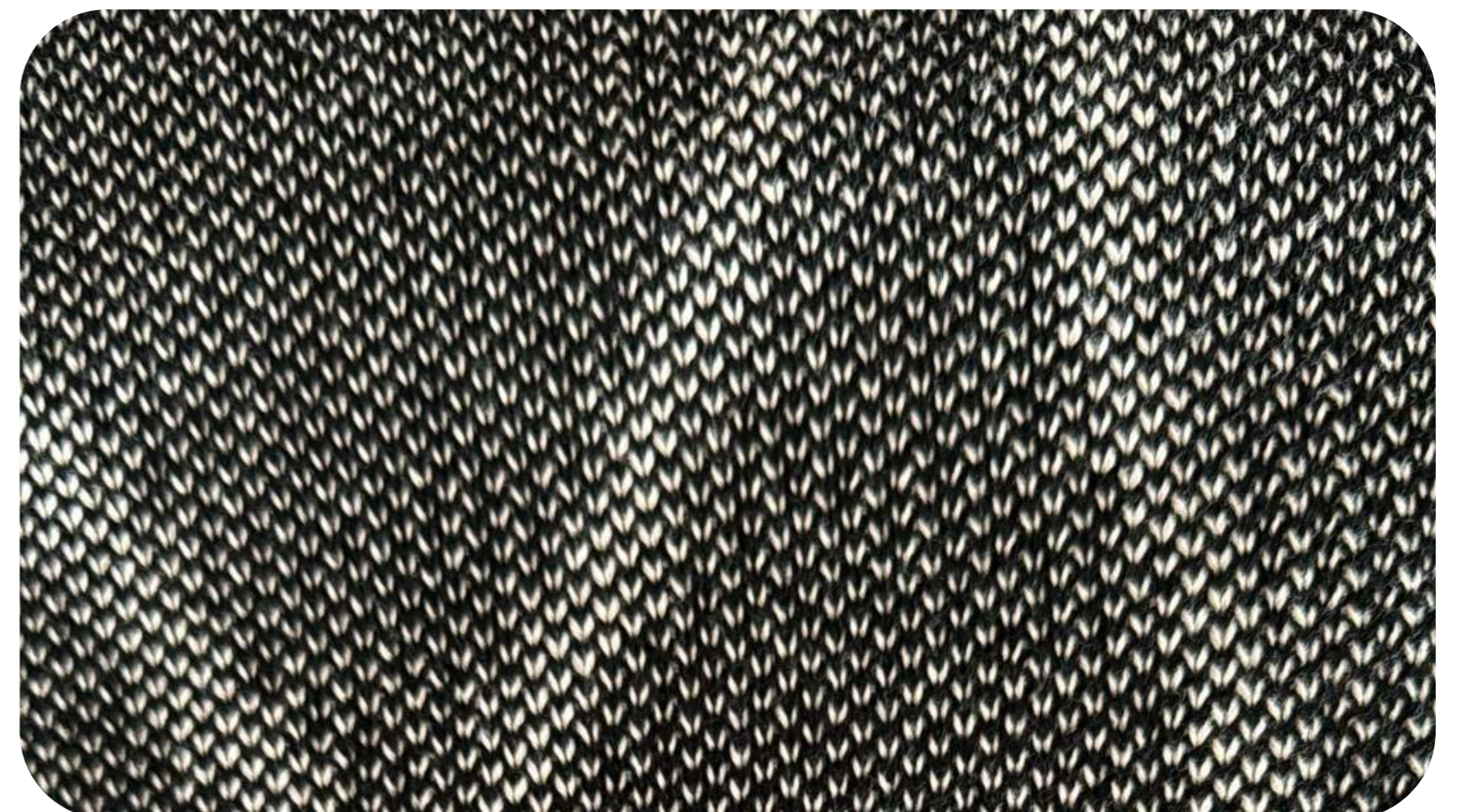


Fig: Jacquard interlock backside

# Vanisé rib

---

Vanisé knit is a double-sided fabric similar to rib fabric, but the yarns used on the front and back are in different colours to create a unique look.



Fig: Vanisé 1



Fig: Vanisé 2

# Endings

---



1x1 crew neck



1x1 rib cuff



1x1 hem



2x2 crew neck



2x2 rib cuff



2x2 hem



mock turtleneck



rolled edge cuff



rolled edge hem

# Yarn

Composition

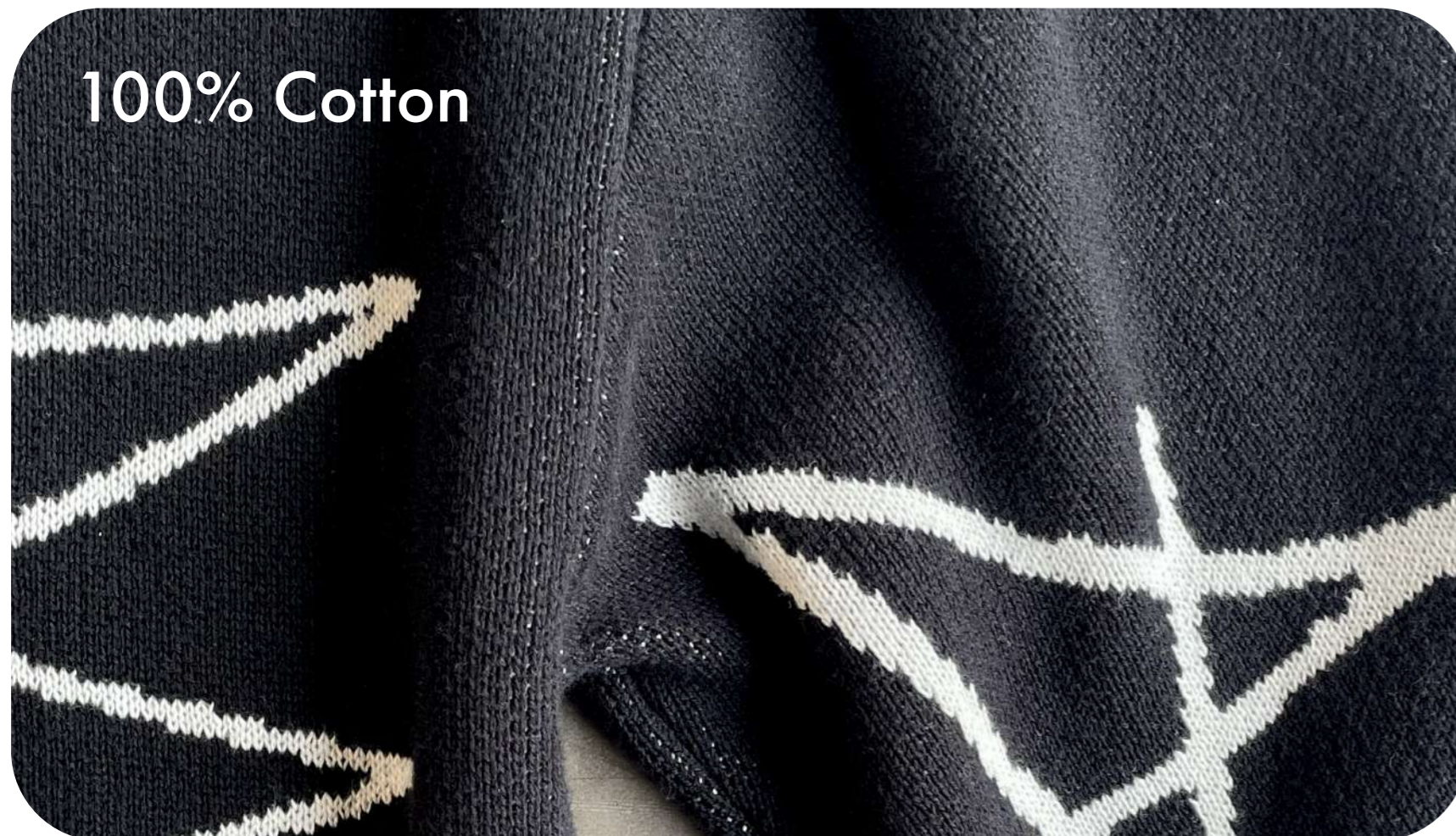
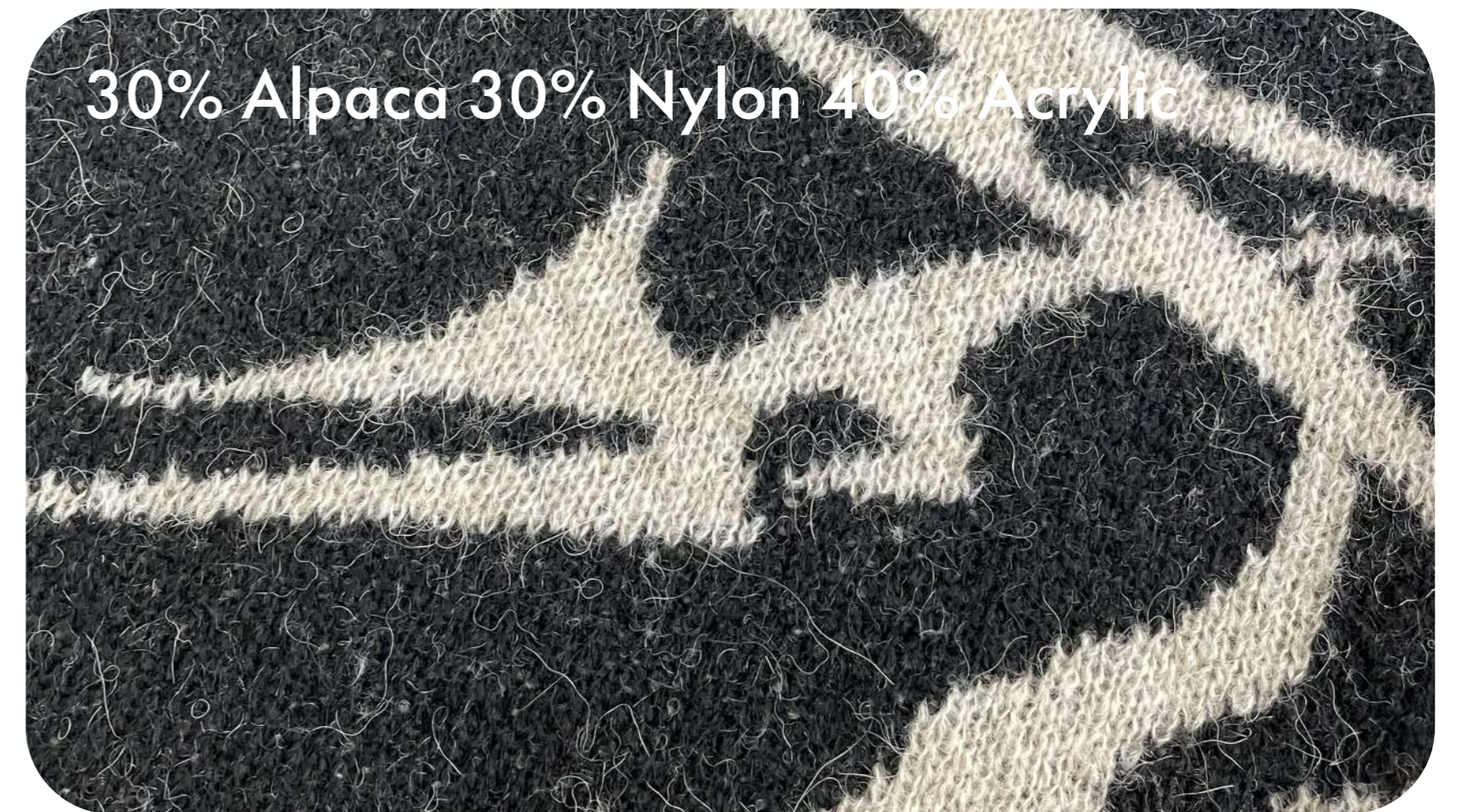
Colour

Gauge

# Yarn composition

---

There are three yarn composition to choose from.





# Yarn colour

---

For all yarns, please select colors from the colour cards provided below.

Special note for Cotton:

When selecting a cotton yarn, you have two options: choose a color from the colorcard or opt for vegetable dyeing. If you prefer vegetable dyeing, please provide a specific Pantone TCX code for the desired color (colour on actual garment may vary).



Fig: vegetable dyed

# 100% Cotton



# 100% Cotton



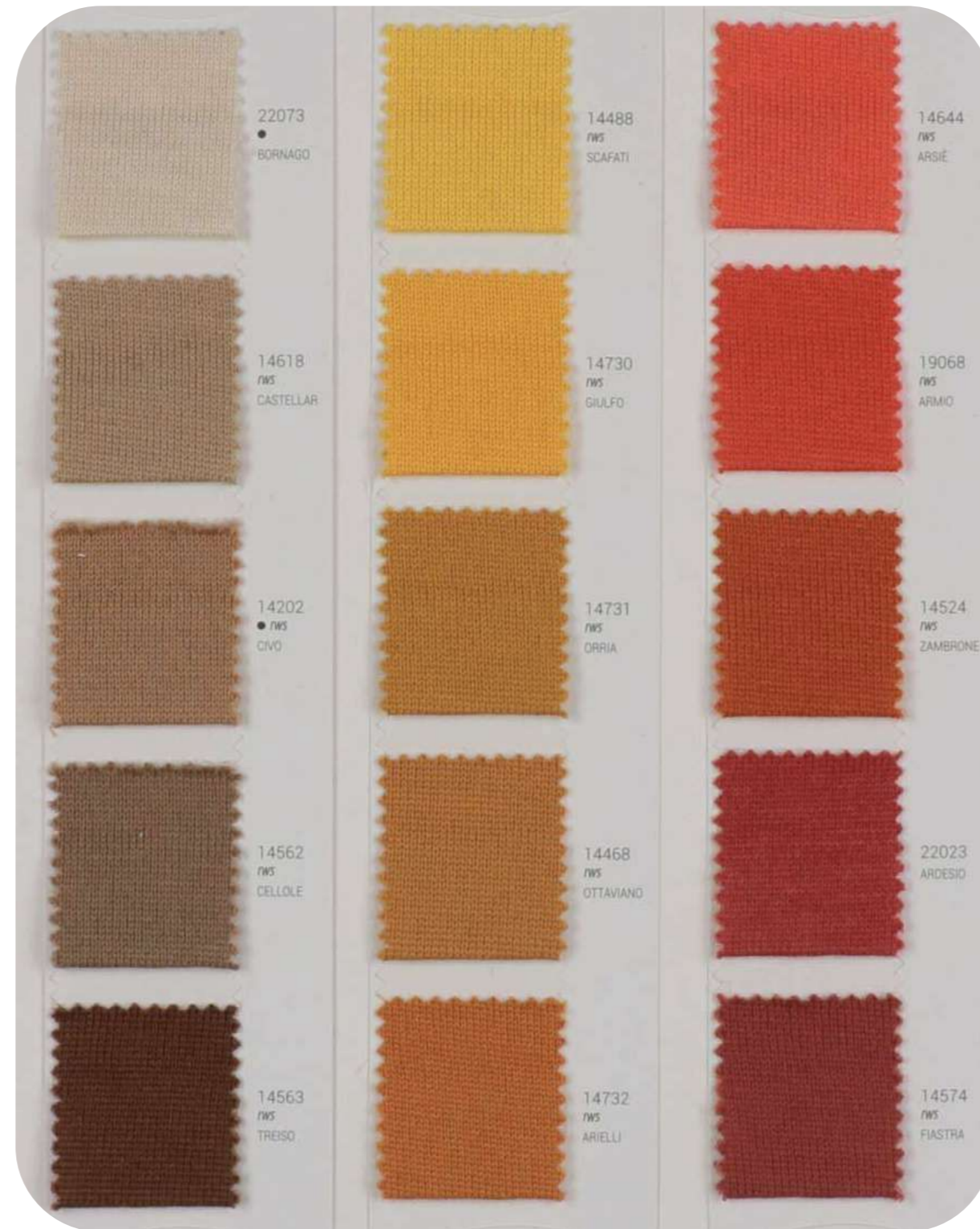
# 30% Alpaca 30% Nylon 40% Acrylic



# 100% Merino



# 100% Merino



# 100% Merino



# Gauge

---

Gauge is the term used to describe the needle spacing and yarn dimensions.

It can be defined as the number of needles per unit inch. It is the major factor in determining the fabric density and appearance.

**The larger the gauge, the finer the fabric you will get.**



Fig: Finer gauge



Fig: Larger gauge



# Customization

Embroiderys

Patches

Chain Stitch

Dye

# Jacquard

---

Jacquard knit customization is a technique used to create detailed and complex patterns directly into the knitted fabric. It allows for intricate designs and motifs to be woven into the material rather than printed on top.



Fig: Jacquard (left) vs Interlock (right)



Fig: Jacquard

## Jacquard vs Jacquard interlock

Jacquard on single Jersey is a local motif, with the yarn visible on the backside. The jacquard interlock technique is double-layered, so the backside of the motif is mirrored on the backside.

# Embroidery

---



Fig: Embroidery on knit

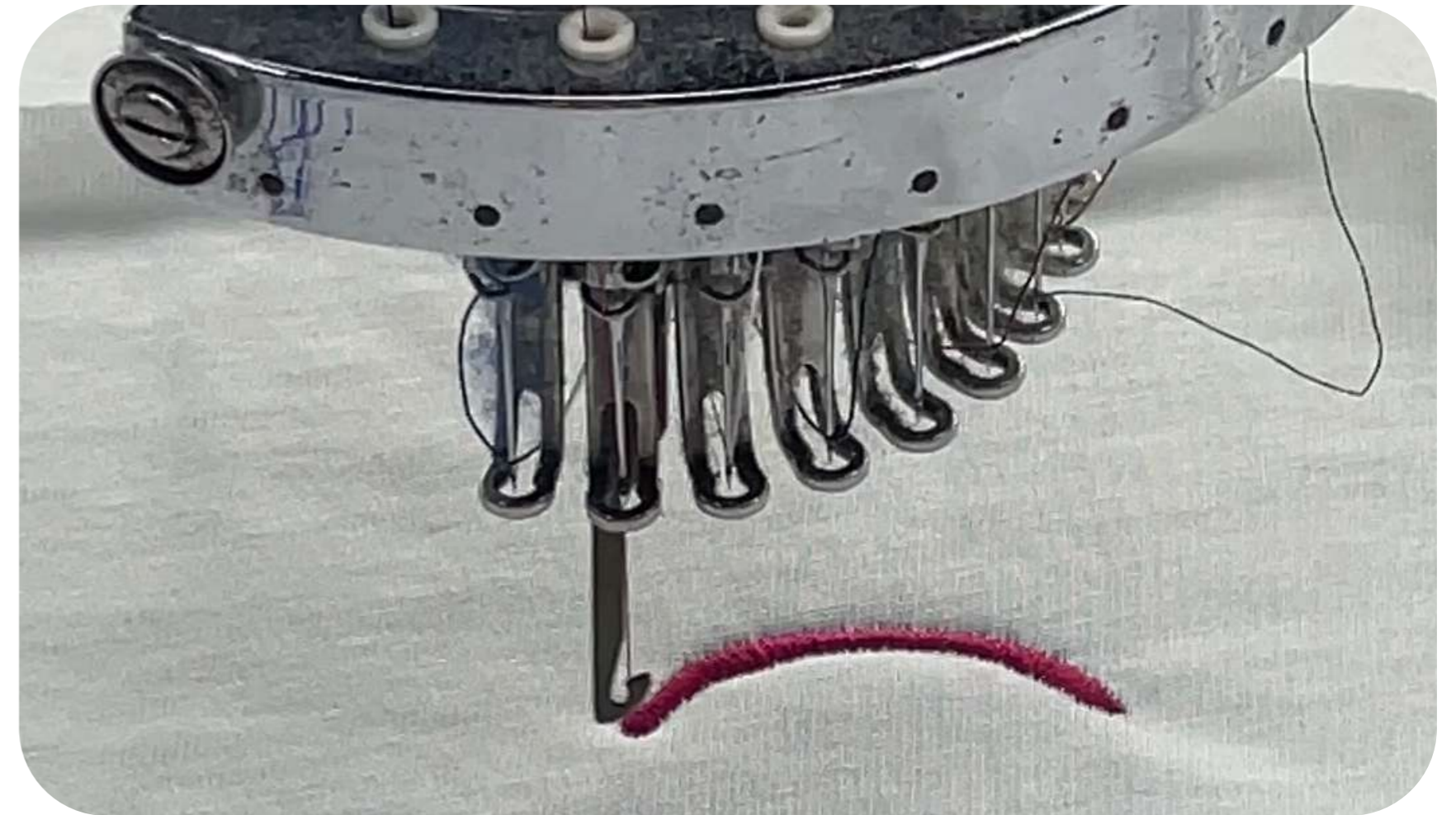


Fig: Embroidery machine

# Patch

---



Fig: Chenille patch

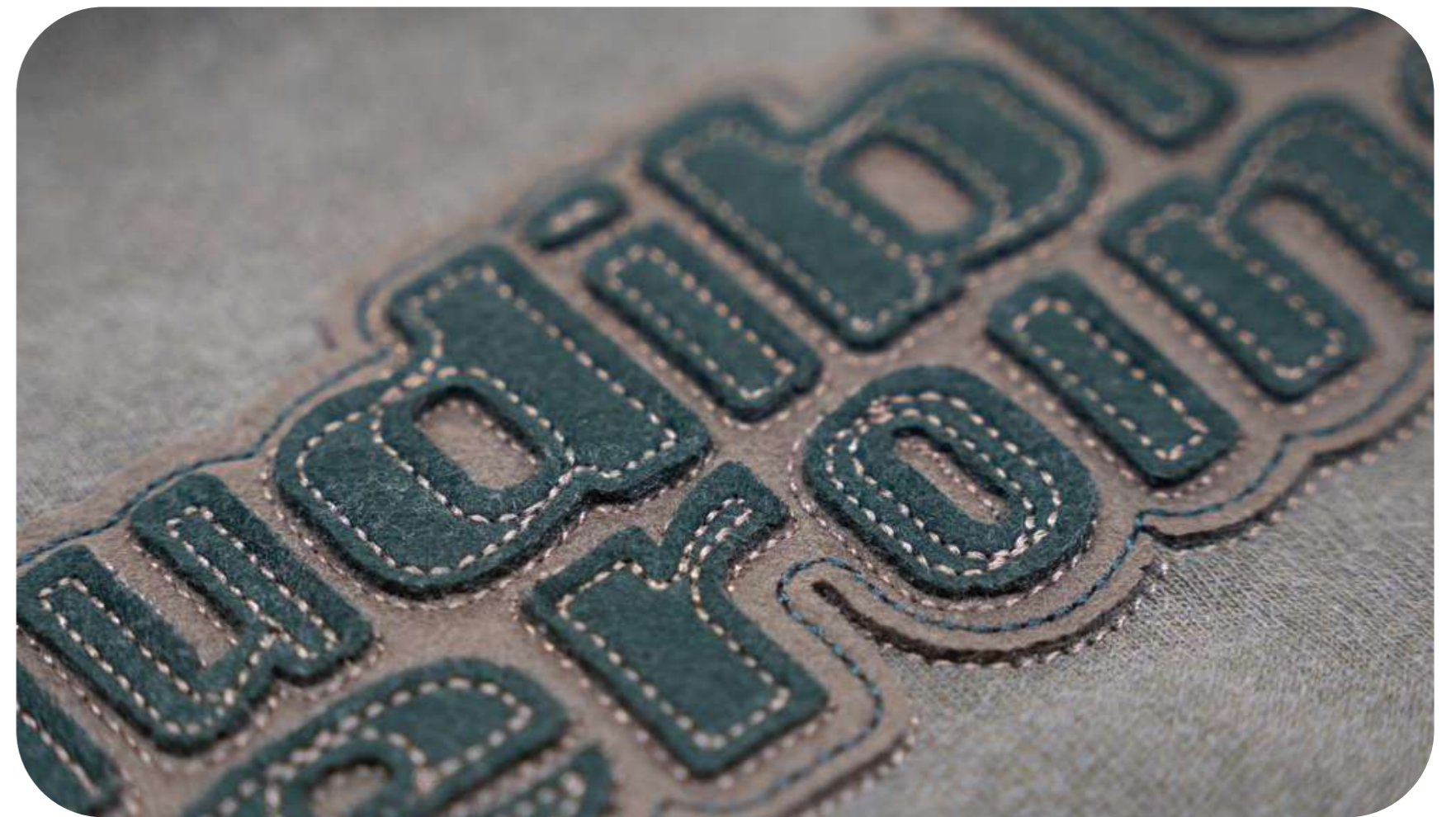


Fig: Patch

**Label**

# Label

---

Labwear offers three different label types: Polyester, raw cotton canvas, and a woven label.

**Polyester label:** no minimum

**Raw Cotton Canvas (most sustainable option):**  
Minimum order quantity is 250 pieces.

**Woven label (most premium option):**  
Minimum order quantity is 1500 pieces.

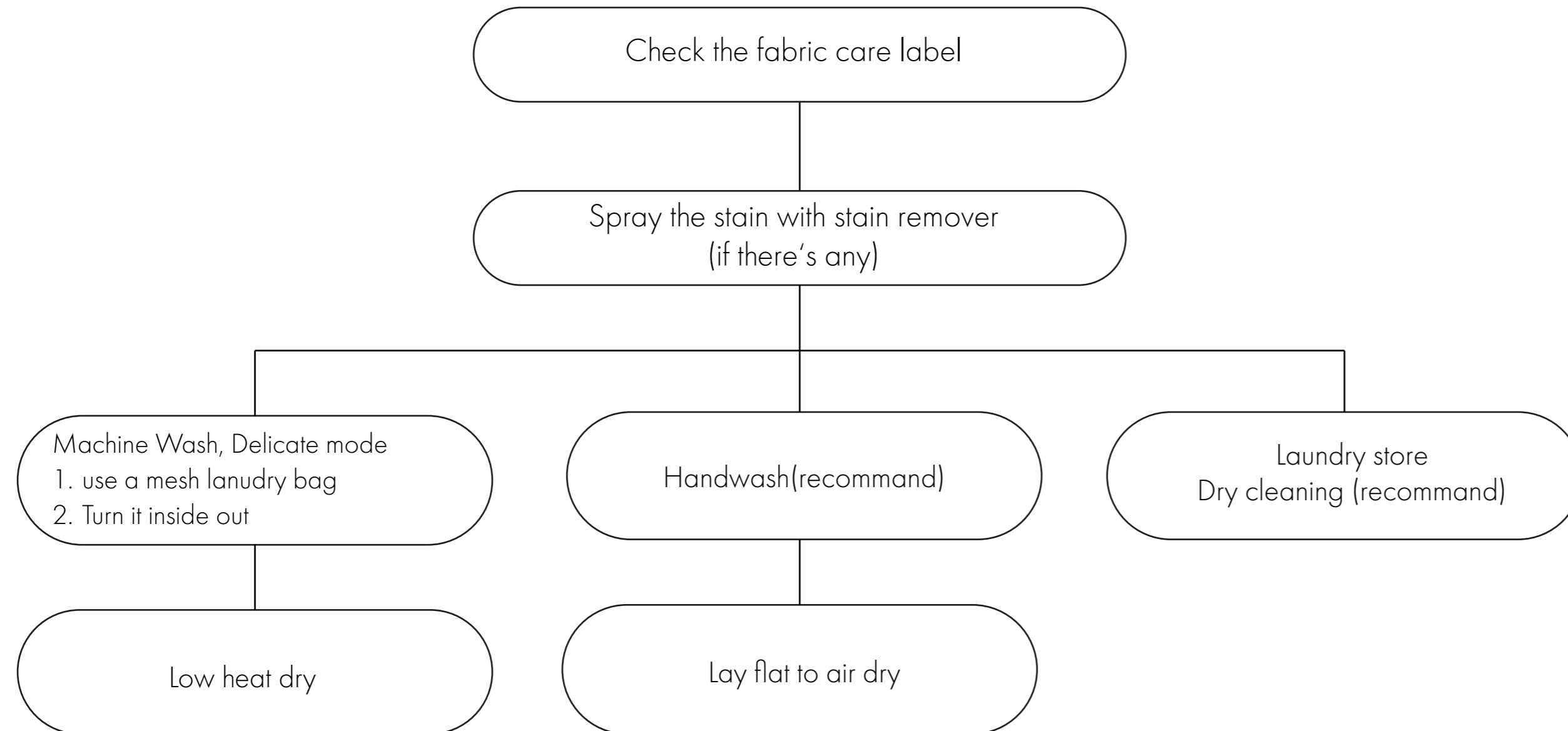


Fig: Label options

# Knitwear Care Instructions

How to Wash & Dry

# Wash & Dry Guideline



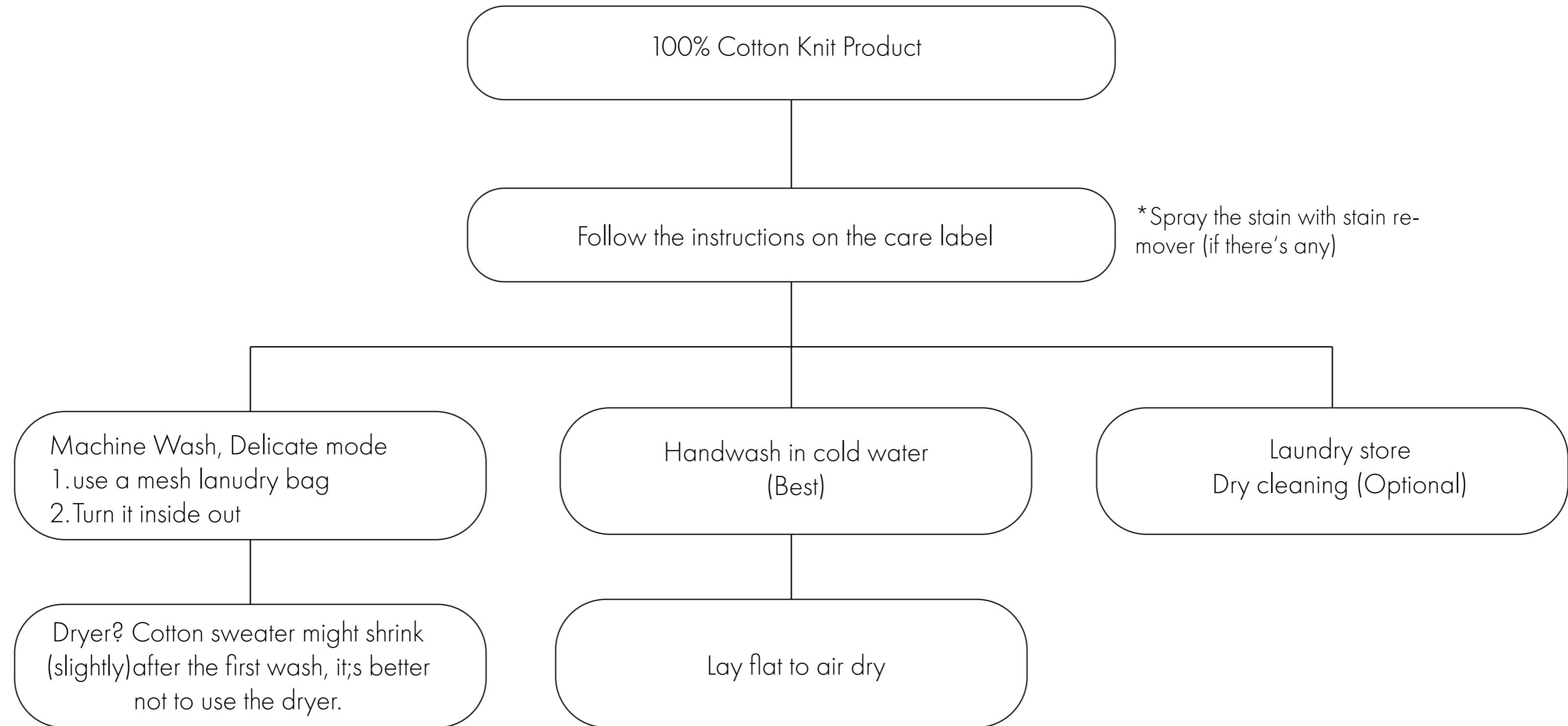
## Red flags for knitwear

- do not over wash
- do not twist to push out the water (squeeze it gently)
- do not hang, fold instead



# Cotton Care

---



# Wool Care

---

